

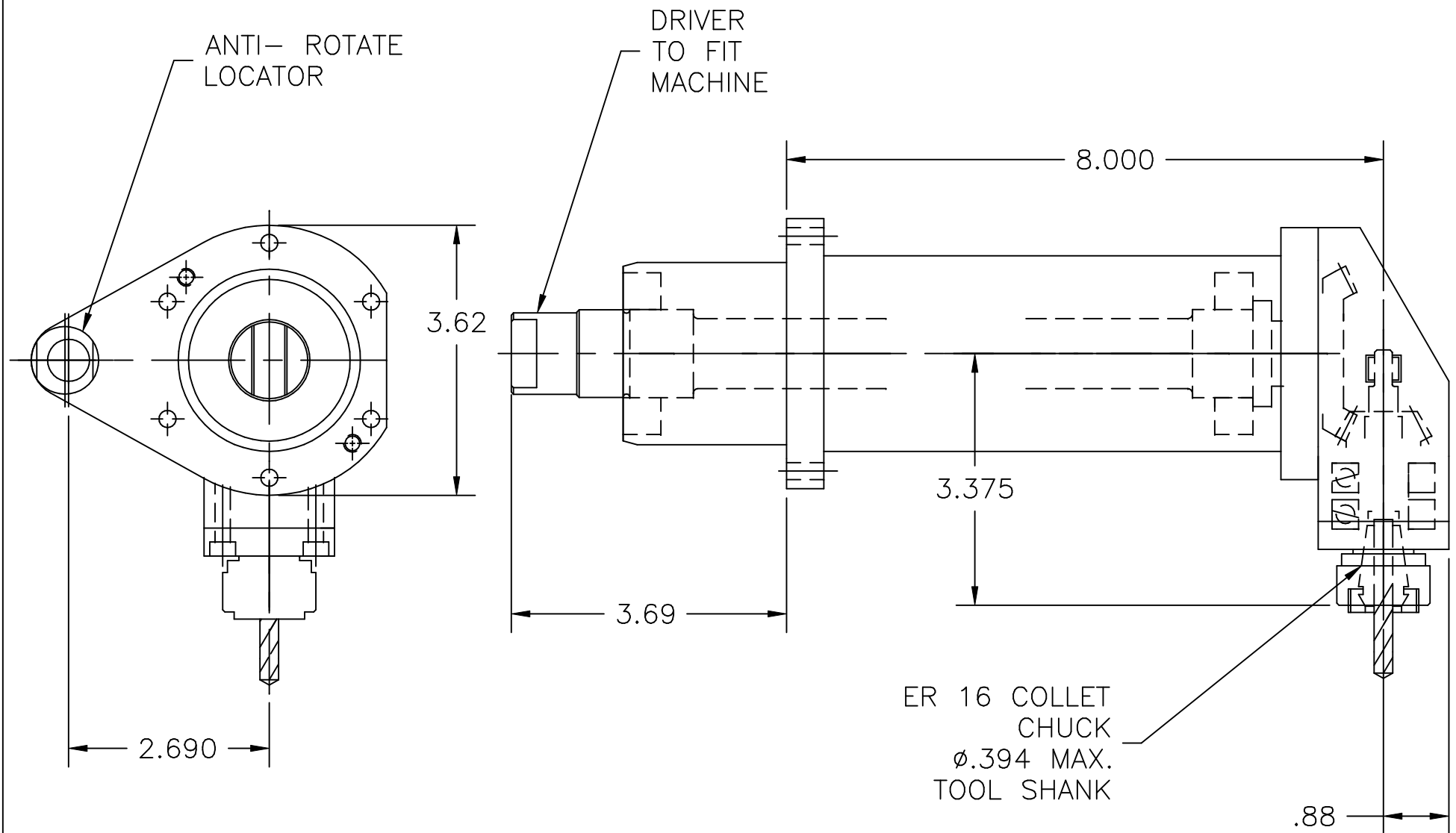
LARGE VMC ATTACHMENTS IDEA BOOK



Key Products, Inc.
10600 W. Glenbrook Ct.
Milwaukee, WI 53224
414-355-5399

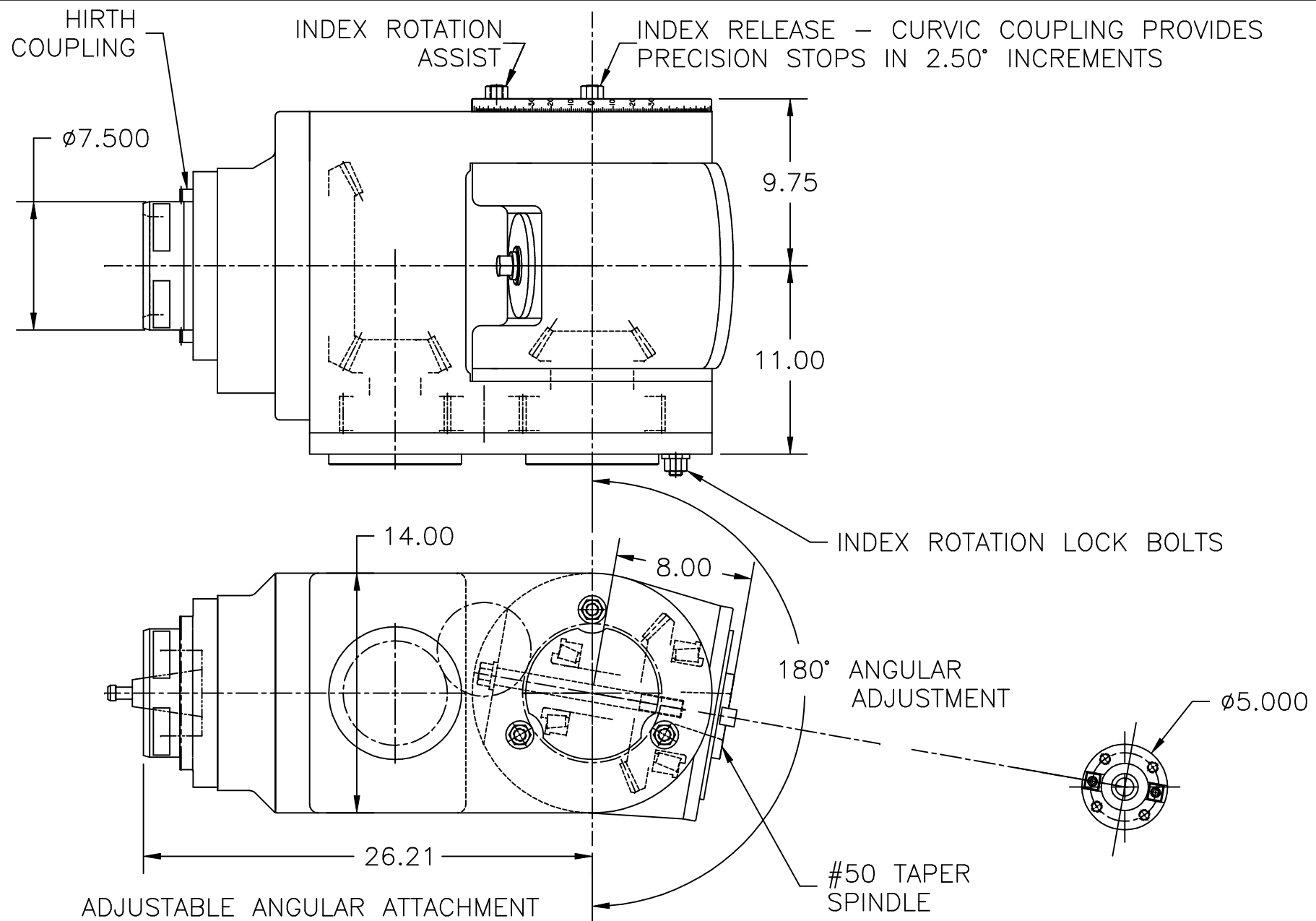
<http://www.keyproducts.net>

Key Products designs and manufactures machining attachments. This book includes some examples of previous projects. However, we can produce an attachment for your specific application.



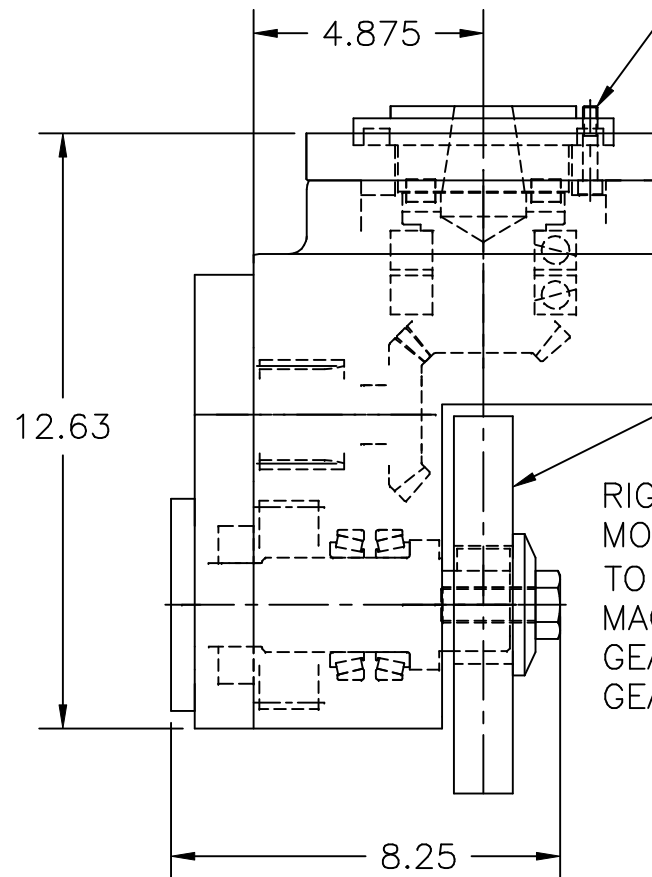
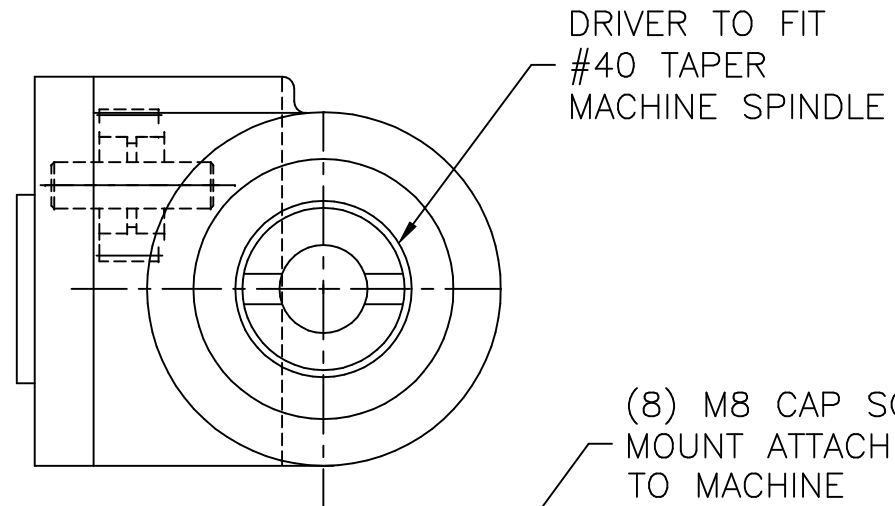
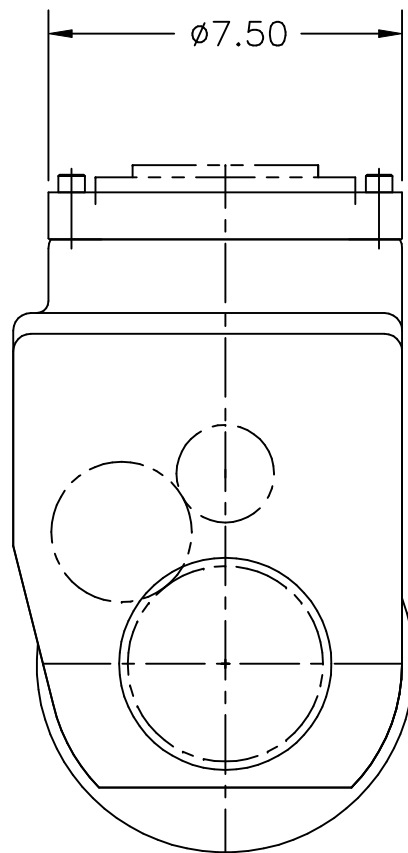
RIGHT ANGLE DRILL ATTACHMENT
 MOUNTS VERTICALLY
 TO SUGINO HMC TURRET
 GEAR RATIO = 1.0 TO 2.0 INCREASE
 GEAR CAP. = 0.25 HP. PER 100 RPM OUTPUT

DRAWING SCALE 1/2
 96113-300



ADJUSTABLE ANGULAR ATTACHMENT
 MOUNTS VERTICALLY
 TO HERKULES GANTRY MILL #GMC 144
 WITH AUTO COUPLER
 GEAR RATIO = 1.0 TO 1.0
 GEAR CAP. = 35 HP. PER 100 RPM

DRAWING SCALE 1/8
 97166-300



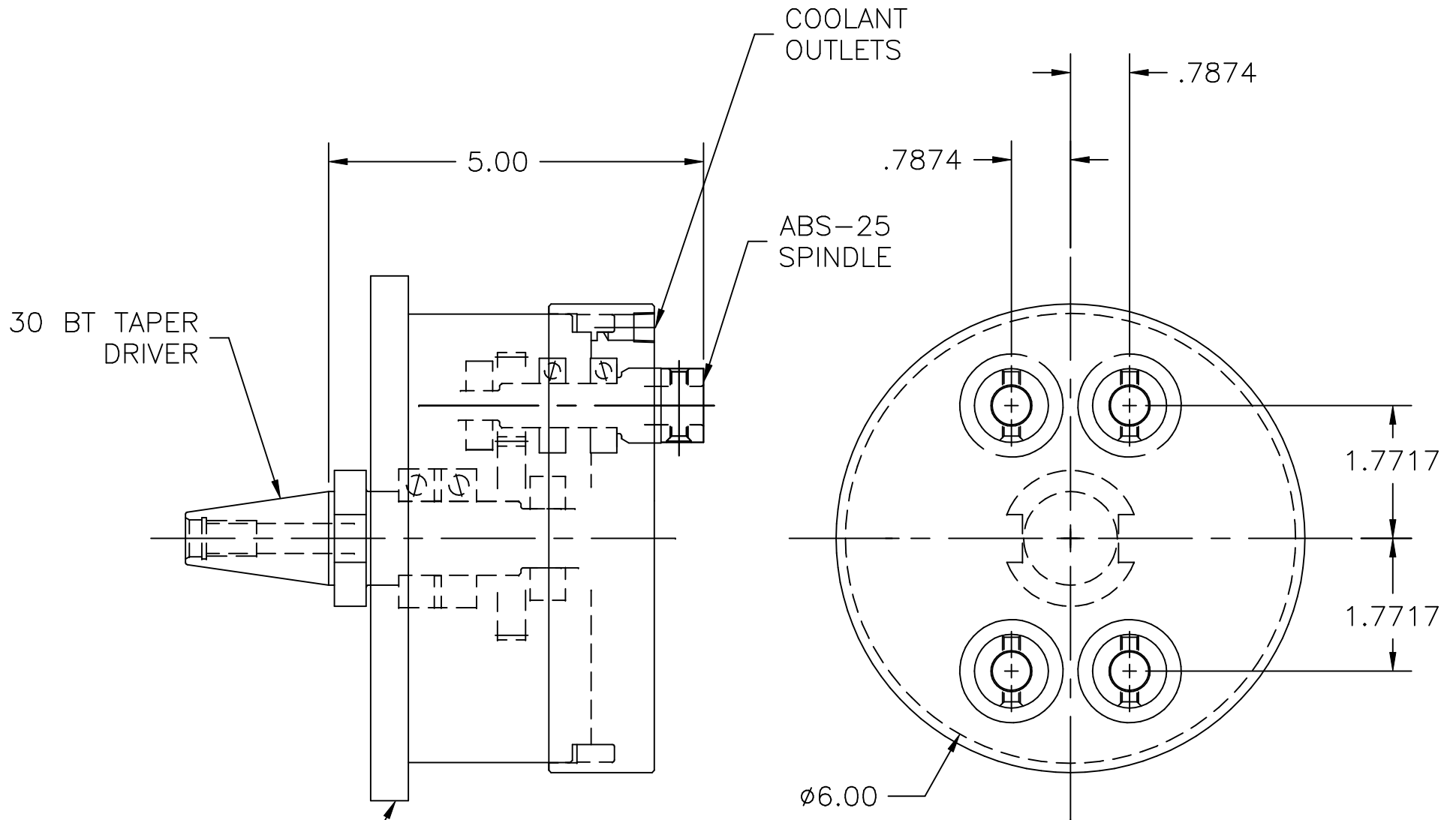
(8) M8 CAP SCREWS
MOUNT ATTACHMENT
TO MACHINE

$\phi 8.000$ CUTTER

RIGHT ANGLE MILL ATTACHMENT
MOUNTS VERTICALLY
TO IBARMA #ZVL2000
MACHINING CENTER
GEAR RATIO = 1.0 TO 0.5 REDUCTION
GEAR CAP. = 2.5 HP PER 100 RPM
INPUT
= 5.0 HP PER 100 RPM
OUTPUT

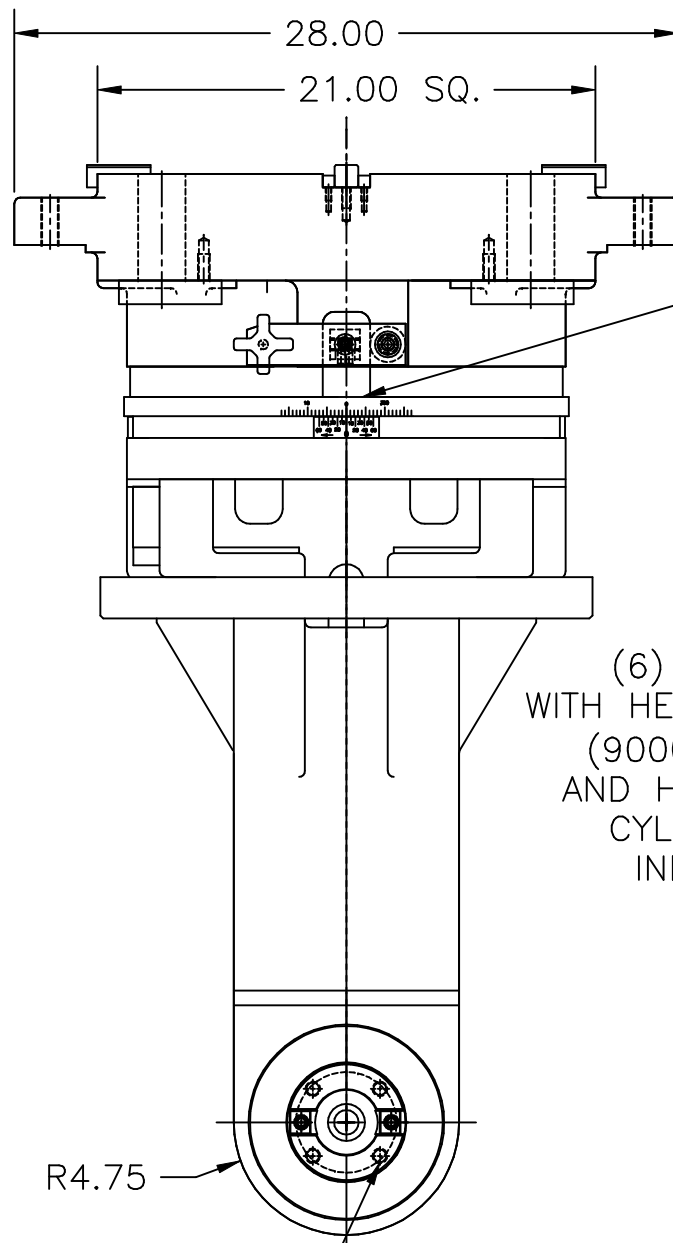
DRAWING SCALE 1/4

99411-300



4 SPINDLE DRILL ATTACHMENT
MOUNTS VERTICALLY
TO KIRA MACHINING CENTER
GEAR RATIO = 1.0 TO 2.0 INCREASE
GEAR CAP. = 0.3 HP. PER 100 RPM OUTPUT

DRAWING SCALE 1/2
203319-300



(4).625-11 TAP
ON $\phi 4.000$ B.C.

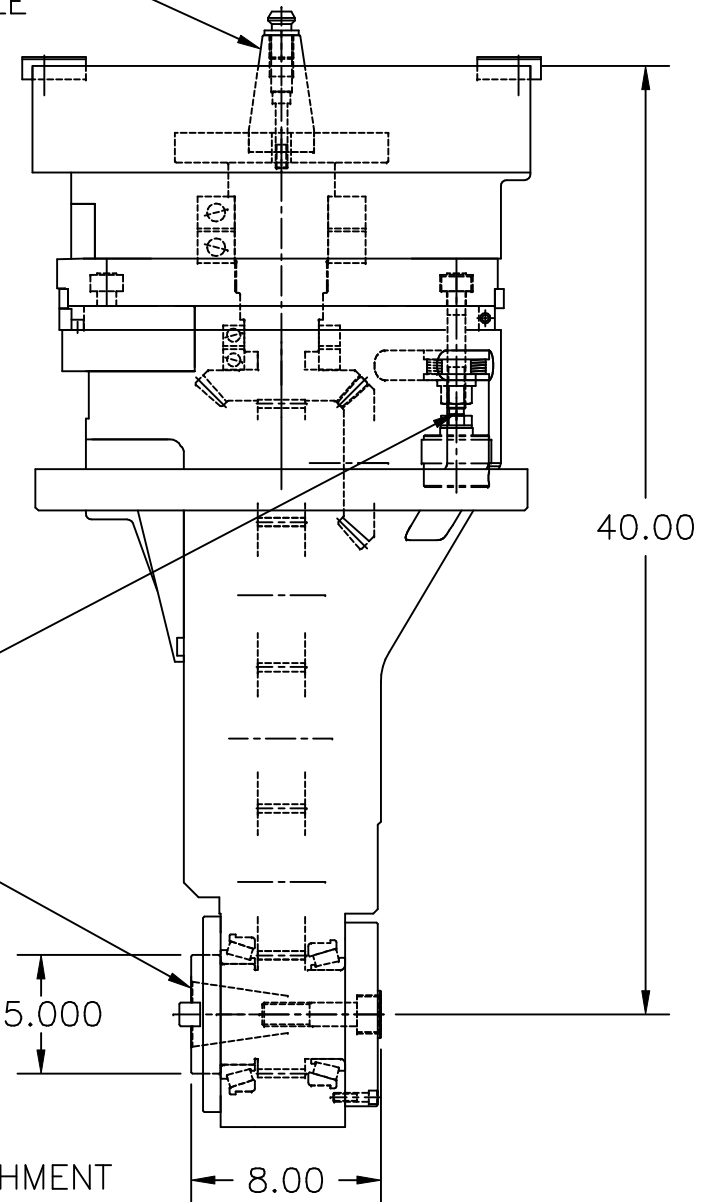
DRIVER
TO FIT #50 TAPER
MACHINE SPINDLE

360° INFINITE
INDEX WITH
PRECISION SHOT
BOLT STOPS AT
EVERY 90°

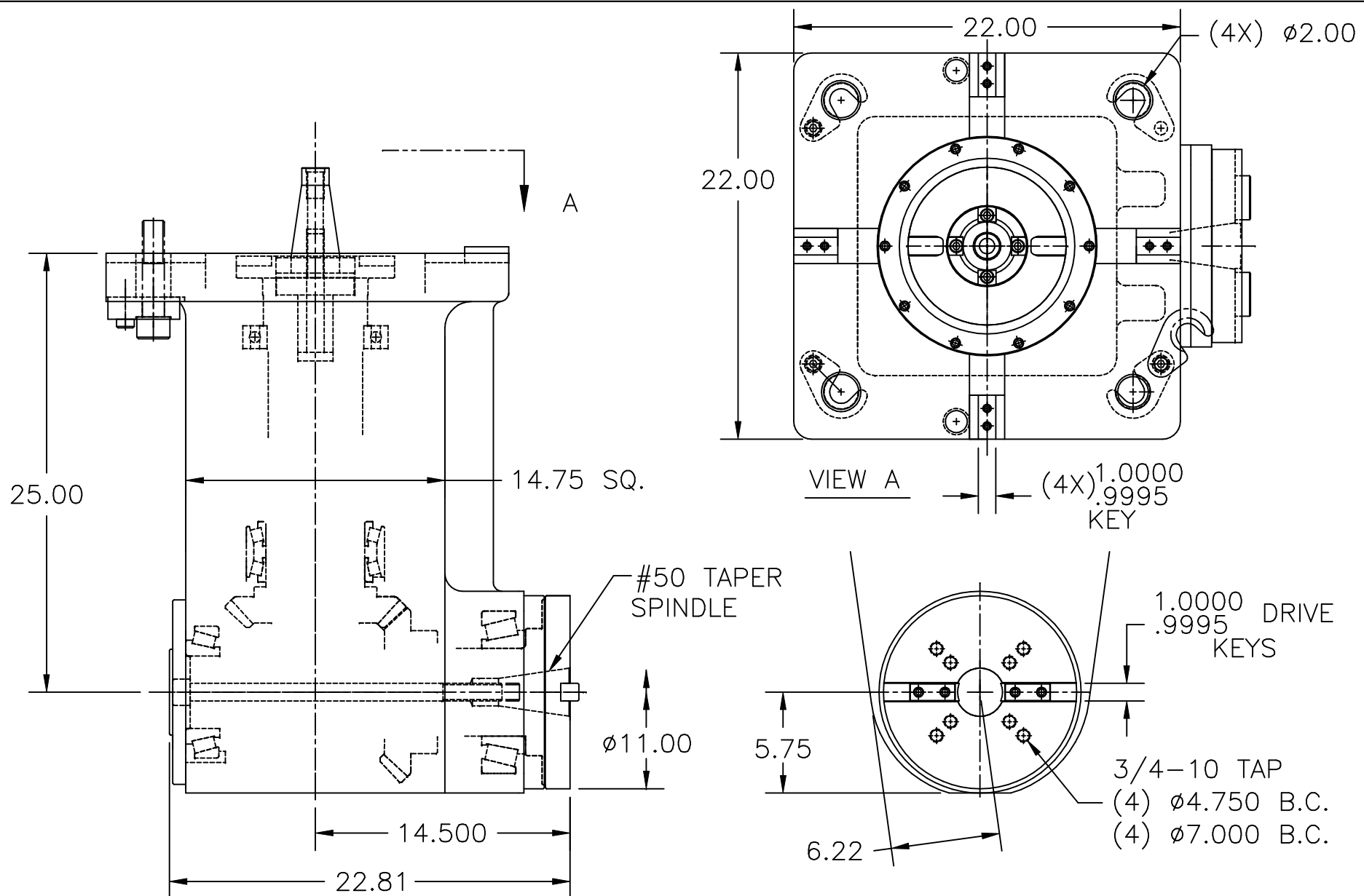
(6) TEE BOLT CLAMPS
WITH HEAVY DUTY SPRINGS
(9000 LBS EACH BOLT)
AND HYDRAULIC RELEASE
CYLINDERS FOR QUICK
INDEX REPOSITIONING

#50 TAPER
SPINDLE

RIGHT ANGLE MILL/BORE ATTACHMENT
MOUNTS VERTICALLY
TO INGERSOLL MILL
GEAR RATIO = 1.0 TO 1.0
GEAR CAP. = 16 HP. PER 100 RPM

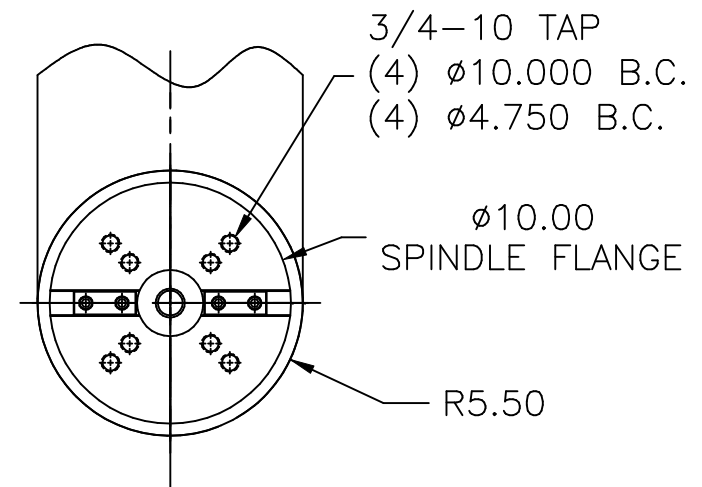
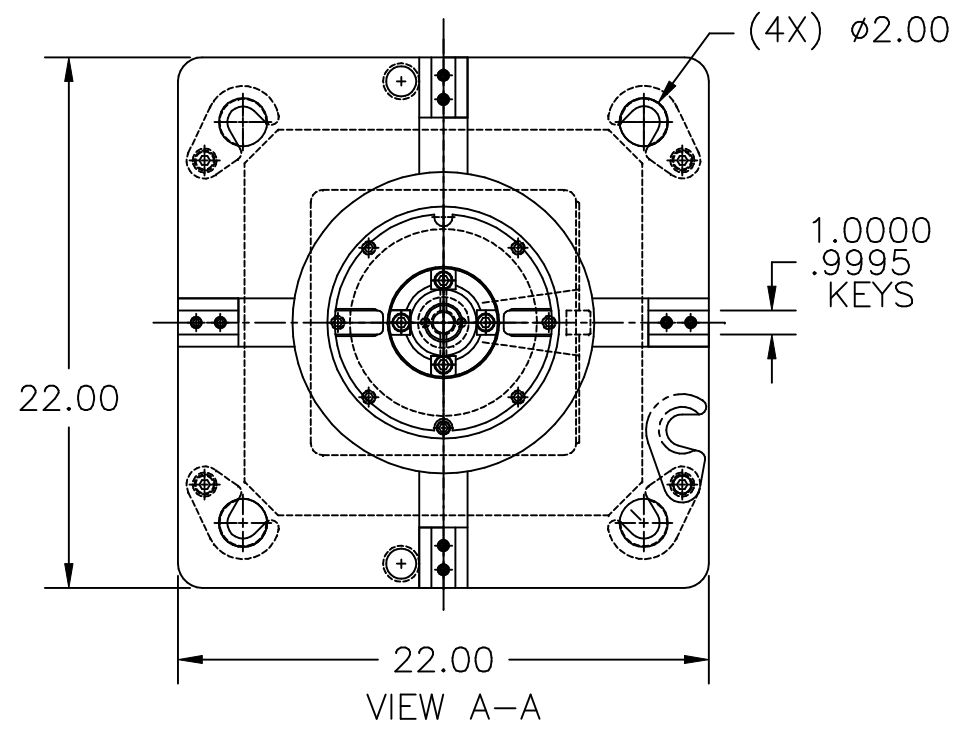
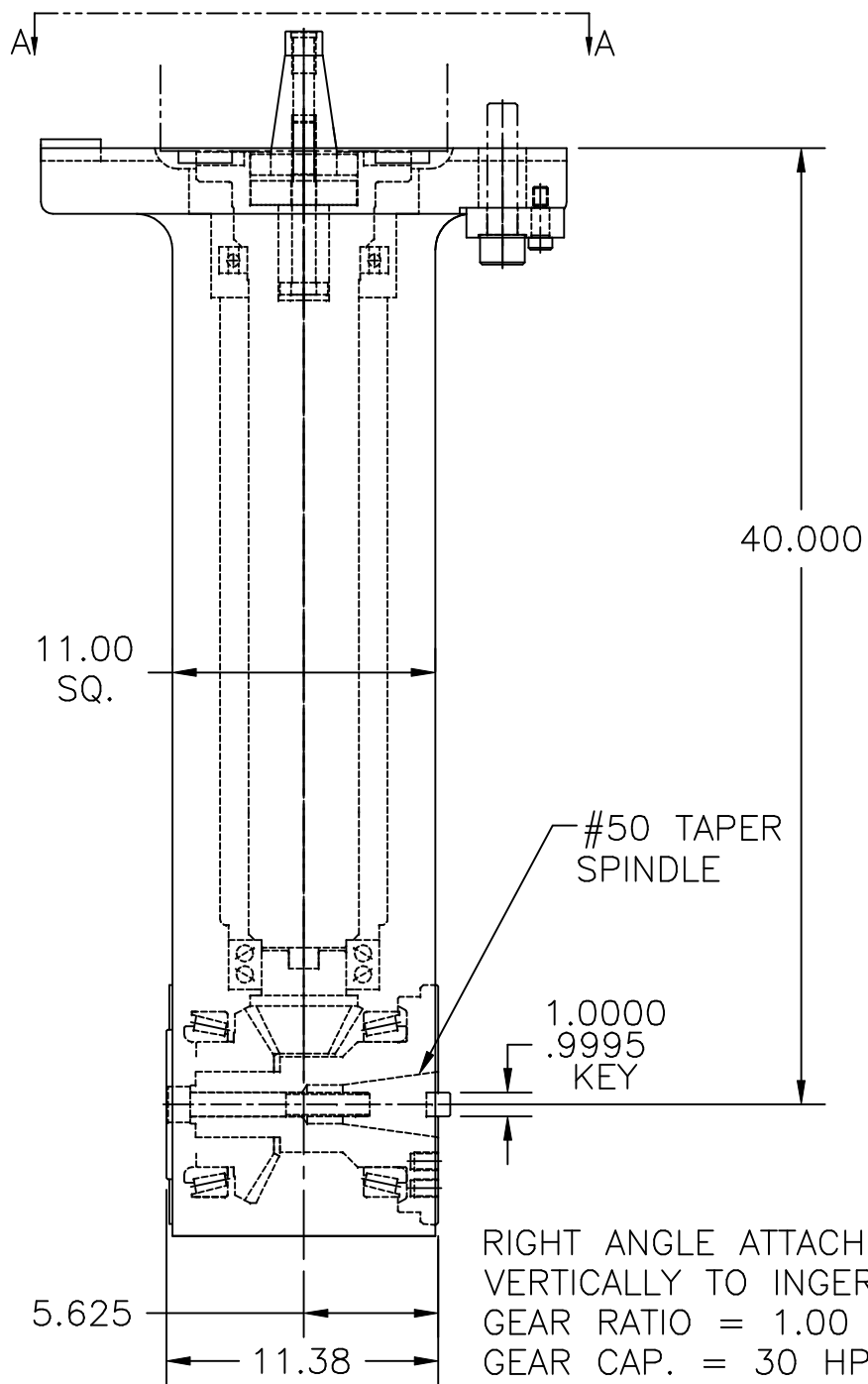


DRAWING SCALE 1/8
205206-300



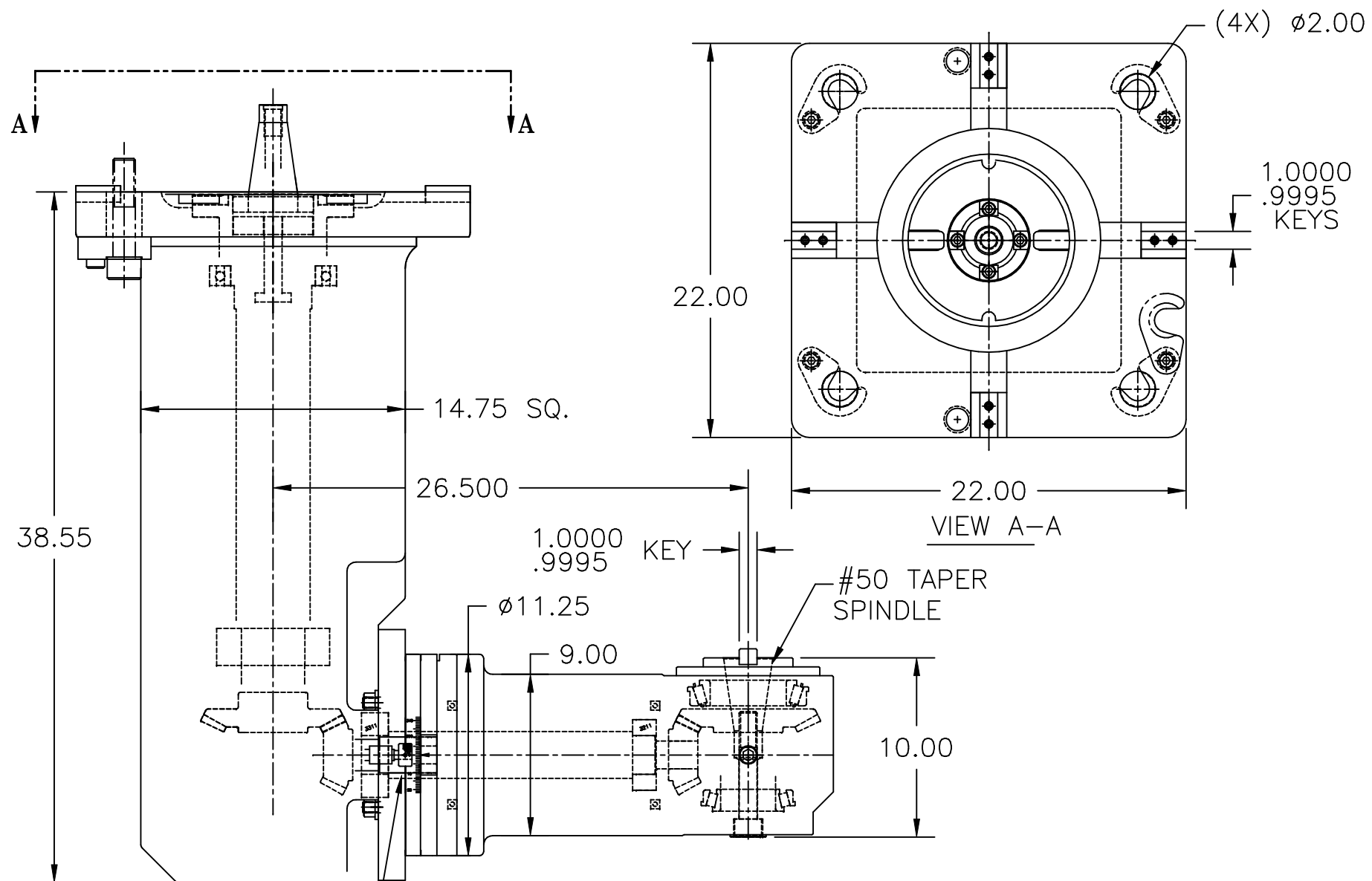
RIGHT ANGLE ATTACHMENT MOUNTS VERTICALLY
TO INGERSOLL MILL
GEAR RATIO = 1.00 TO 1.00
GEAR CAP. = 38 HP. PER 100 RPM
NOT TO EXCEED 150 HP
MAX. SPEED = 750 RPM

DRAWING SCALE 1/8
207158-300-01



RIGHT ANGLE ATTACHMENT MOUNTS
VERTICALLY TO INGERSOLL MILL
GEAR RATIO = 1.00 TO 0.55 REDUCTION
GEAR CAP. = 30 HP. PER 100 RPM OUTPUT
NOT TO EXCEED 100 HP.
EST. WT. = 1500 LBS.

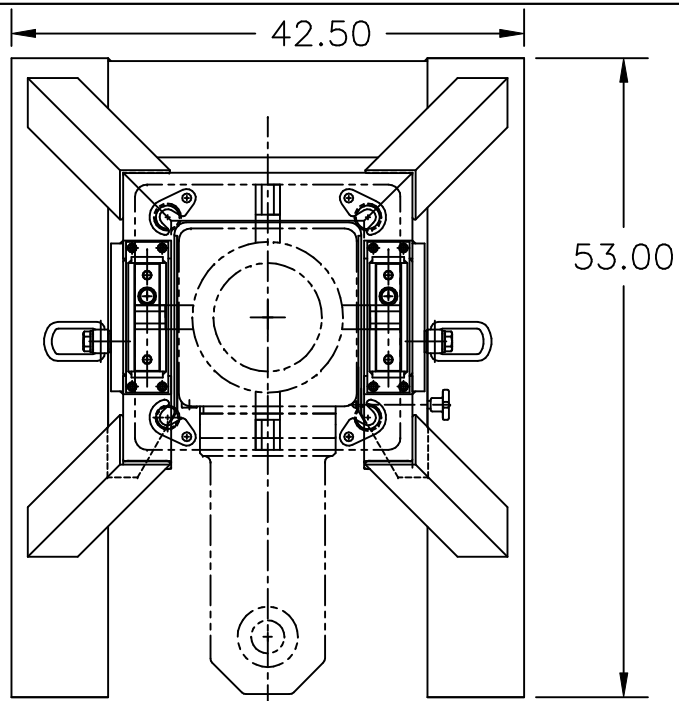
DRAWING SCALE 1/8
207159-300-01



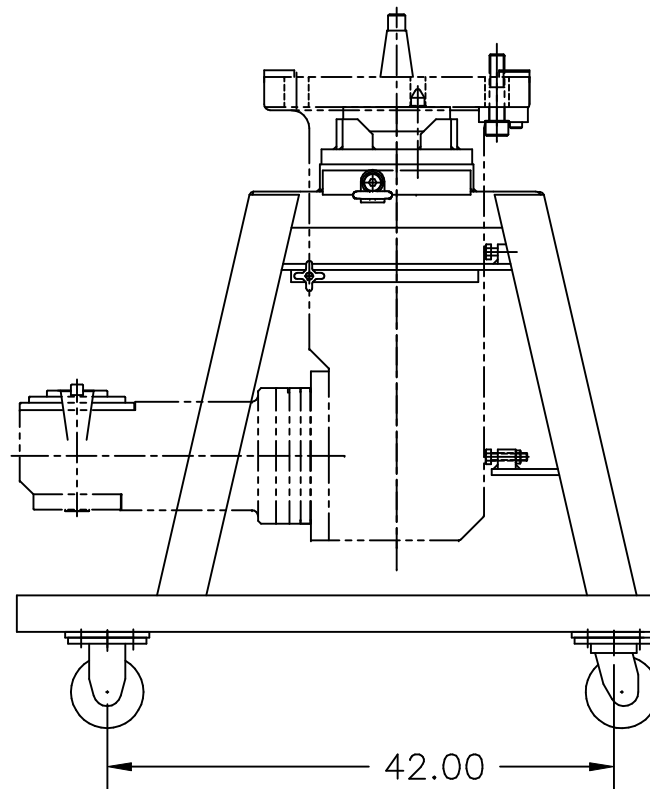
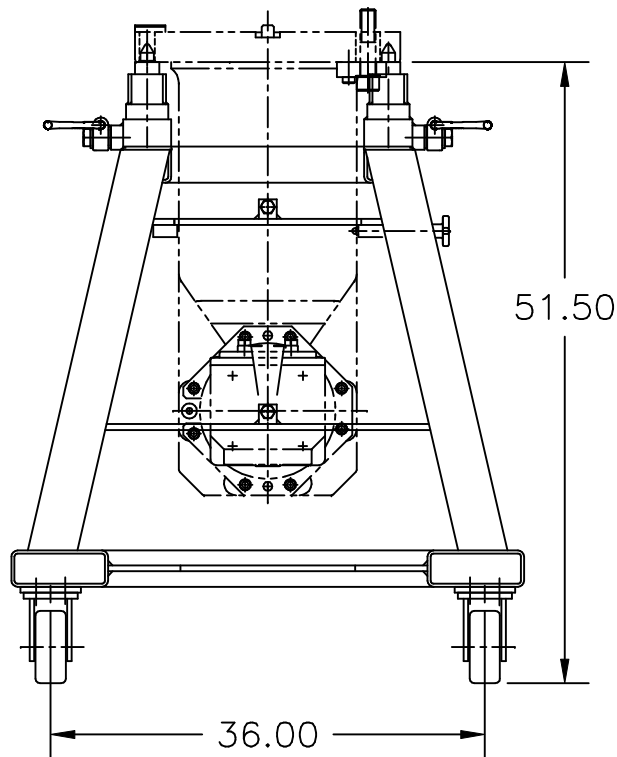
360° INDEX WITH PRECISION
SHOT BOLT LOCKS EVERY 90°

OFFSET ATTACHMENT MOUNTS VERTICALLY
TO INGERSOLL MILL
GEAR RATIO = 1.00 TO 1.00
GEAR CAPACITY = 16 HP PER 100 RPM
NOT TO EXCEED 80 HP.
EST WT. = 2400 LBS.

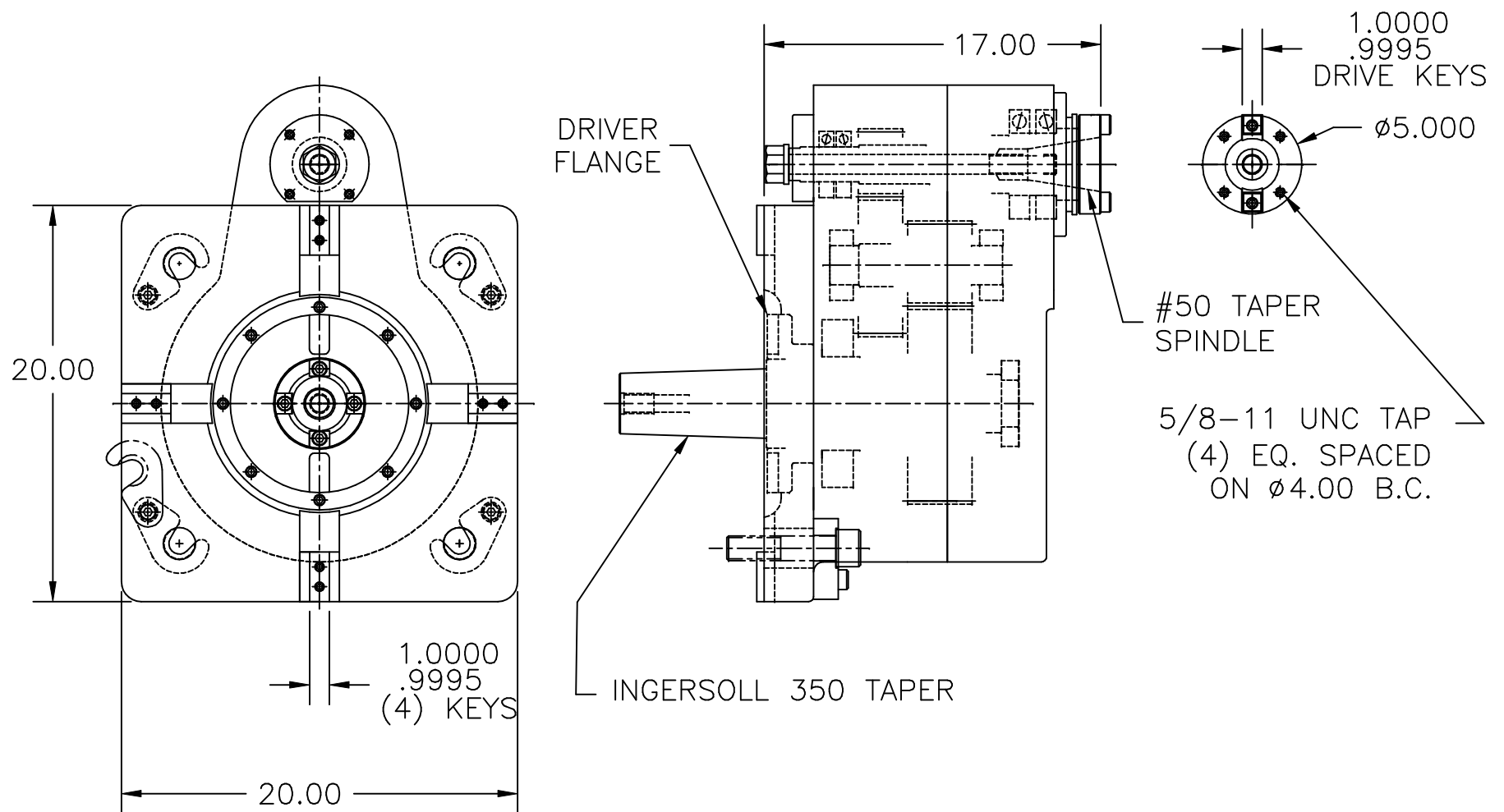
DRAWING SCALE 1/8
207160-300-01



STORAGE RACK FOR
OFFSET INDEXABLE ATTACHMENT
#207160-300

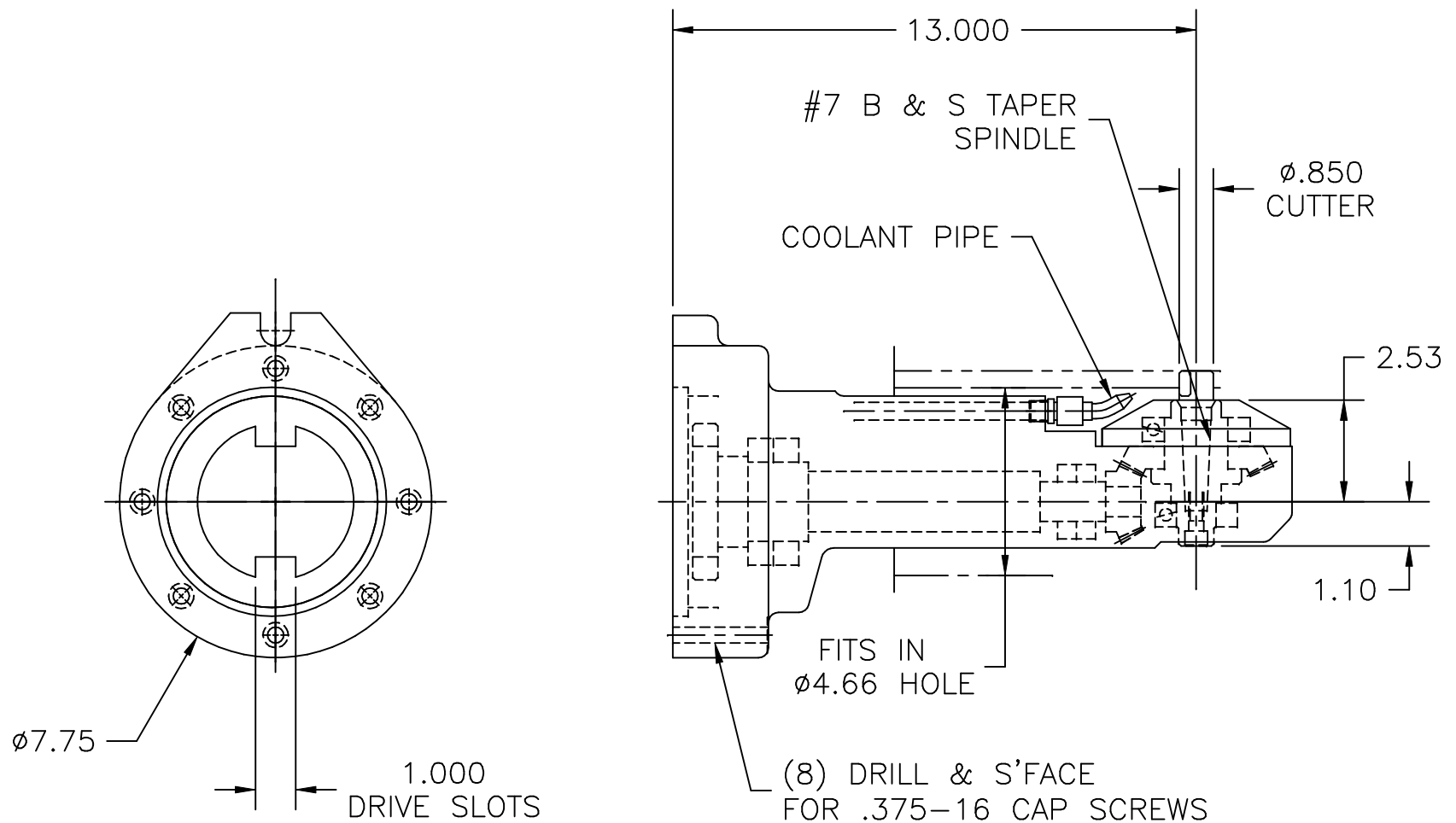


DRAWING SCALE 1/16
207160-910-01



OFFSET SPEEDER ATTACHMENT
 MOUNTS VERTICALLY TO INGERSOLL MILL
 GEAR RATIO = 1 TO 5 INCREASE
 GEAR CAP. = 10 HP. PER 100 RPM OUTPUT
 NOT TO EXCEED 100 HP.
 MAX. INPUT SPEED = 400 RPM (2000 RPM OUTPUT)

DRAWING SCALE 1/8
 207214-300-01



RIGHT ANGLE MILL HEAD
 MOUNTS VERTICALLY TO HELLER MACHINING CENTER
 GEAR RATIO = 1.0 TO 0.5 REDUCTION
 GEAR CAP. = 1.0 HP. PER 100 RPM OF INPUT

DRAWING SCALE 1/4
 K11489